

AUCTION

TIMED ONLINE

Pre-Season Inventory Reduction

ZERO TURNS



2013 JOHN DEERE 997 Z-TRAK



2019 GRAVELY PRO-TURN 460



2020 JOHN DEERE Z945M Z-TRAK



2011 CUB CADET TANK LZ

RIDING MOWERS



2009 JOHN DEERE X720



2018 JOHN DEERE X380



2016 JOHN DEERE X370



2015 JOHN DEERE X320

ATV/UTVs



2021 JOHN DEERE TX GATOR



2016 JOHN DEERE 825I XUV



2014 JOHN DEERE XUV 550



2012 JOHN DEERE 825I XUV

VEHICLES



2011 CHEVROLET SILVERADO



2011 FORD ECONOLINE

MFWD TRACTOR

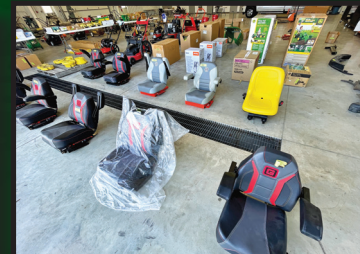


2012 JOHN DEERE 1026R

OTHER ITEMS



QTY. OF LAWN & GARDEN ITEMS



PARTS, TOYS & ACCESSORIES



Opens: Wednesday, March 27
Closes: Saturday, April 6 at 1PM CDT 2024

STEFFES GROUP FACILITY / 2245 E BLUEGRASS RD, MT. PLEASANT, IOWA

The team at City Tractor Co. has a large selection of new & used lawn and garden equipment leading into the 2024 season. This is a great opportunity to purchase quality, low hour riding mowers, tractors, UTVs, and more from a well-known and respected John Deere dealership.

LOADOUT: APRIL 8-12 & APRIL 15-19, MONDAY - FRIDAY, 8AM - 4PM



City Tractor Co., 319.665.6500
John Conrads, 319.325.3226

OR STEFFES GROUP REPRESENTATIVE
TIM MEYER / 319.750.1233



SteffesGroup.com | 319.385.2000 | 2245 E Bluegrass Rd, Mt. Pleasant, IA 52641



All items sold as is where is. Payment of cash, check, or credit card must be made up to two days post auction close before the removal of items. Statements made online take precedence over all advertising. Additional fees may apply. Titles will be mailed. Canadian buyers need a bank letter of credit to facilitate border transfer.